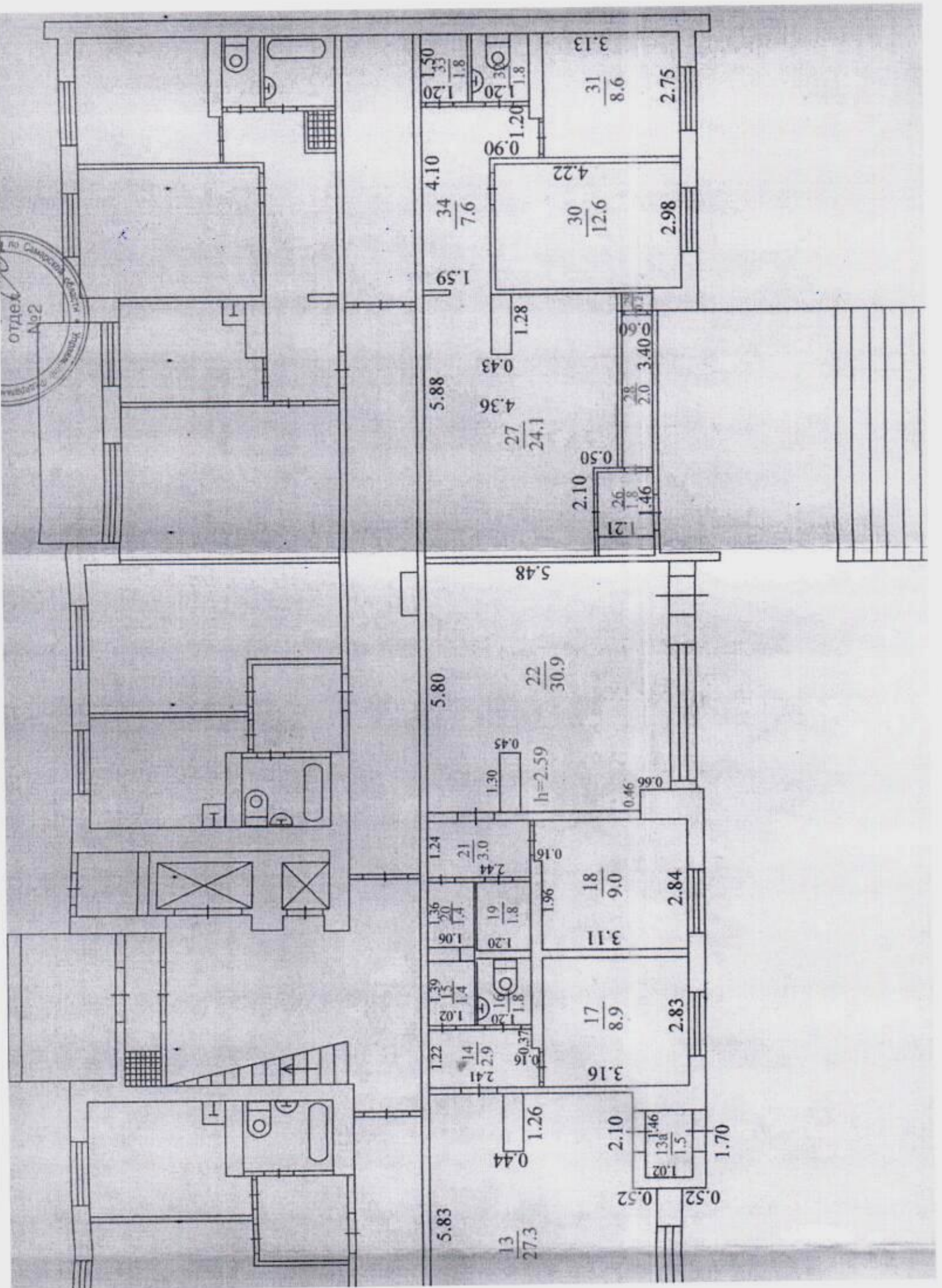


отдел
№2



5.83
13
27.3

0.44
1.26

1.22
1.4
1.39
1.02
1.36
2.0
1.74
1.06

1.24
2.1
3.0
2.44
1.96
0.16

1.20
1.8
1.9
1.8
1.20
1.8
1.20
1.8
1.20
1.8
1.20
1.8

2.41
2.9
1.4
1.22

0.37
1.8
1.20
1.8
1.20
1.8

3.16
17
8.9
3.11
18
9.0
2.84
2.83

0.46
0.66
h=2.59
1.30
0.45

5.80
22
30.9

5.48

0.50
2.10
1.21
2.6
1.8
1.46

2.0
3.40
0.60

4.36
27
24.1

0.43
1.28

5.88
1.59

34
7.6
4.10

30
12.6
2.98

4.22

31
8.6
2.75

3.13

1.20
1.8
1.20
1.8
1.20
1.8

0.90

0.52
1.70
1.02
1.38
1.46
1.5

2.10